

# MACHINE *Knit* AMERICA

Jan/Feb, 1996  
Vol. 5, No. 4

Design & Fashion for Today's Knitter

\$6.50 (USA)



Quick & Easy Vertical Rib Buttonholes ■ Danis Mc West  
Accent Your Sweaters with Cables ■ Barbara Pavack  
Creating Texture By Knitting With Lycra® ■ Sharon Nani

# Knitting for Profit

By Sharon Nani

**K**nitting for Profit can be a dry and boring topic if you are not a real enthusiast, ready to devour every tidbit of information. I hope I can lighten the load with this article. Everyone can have some fun playing with some very practical, yet unique gift and sellable items made with Lycra®.

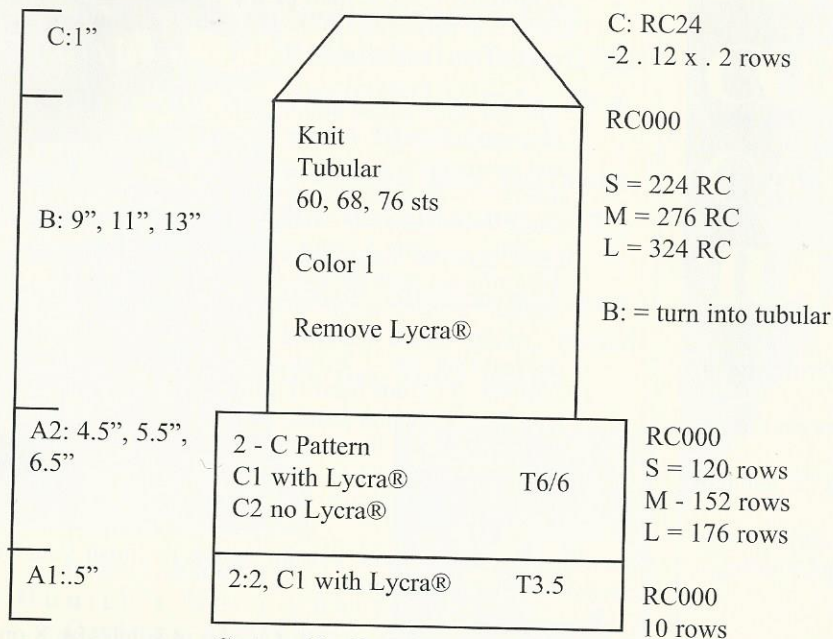
In previous articles of Machine Knit America, I have discussed how to knit with Lycra® and how it is used in practical products such as waistbands. This article will show you a lighter side of the use of Lycra®.

Did you ever think of what would happen if you added Lycra® to one color of yarn in a fairisle or jacquard fabric? This is where experimenting becomes fun. Imagine this. I specialize in the textural fabrication which is produced on the Passap knitting machine. I am very partial to the "Blister Fabric" which is easily produced on this machine. But I have lots of students with Japanese manufactured machines and several with just single bed

machines. Being a teacher, by nature, and not liking to leave any of my students out of the fun, it was my goal to develop a textural fabric for all knitting machines. This sent me on my "Adventures with Lycra®" which turned into a book with several patterns for all varieties of students and machines. I want to share with you a pattern from my book to show you one aspect of textural knitting with Lycra®. I hope that this will stimulate you to experiment on your own and make unique fabrics which can be applied to all kinds of exciting projects. This project is a 2 color jacquard sock. The Lycra® is used in the practical sense to hold the sock up on the leg. It is used in the "fun sense" to create an interesting fabric. This fabric could be used in lots of projects like tank tops, leggings, head bands, inserts of garments, toys, just let your imagination roll with it!!!! The purpose of giving you this pattern is for you to see how to use Lycra® to create unique and useful fabric.

## Jacquard 2-Color Sock: Diagram 1

-12, 20, 28 sts: LTBO



Cast on 60, 68, 76 stitches (on each bed)

Adult: Small, Medium, Large

### Material:

C1 = 1 end 8/2 cotton with 1 end Lycra®.  
Large = 3 ozs.  
C2 = 1 end 16/2 cotton, 1 oz.

### Pattern/Stitch Size/Gauge:

A1. 2:2 rib      St S 3.5 [1.5]  
1 . 1 1 . 1      N/N  
. 1 1 . 1 1      20 rows/inch

### Pattern/Stitch Size/Gauge:

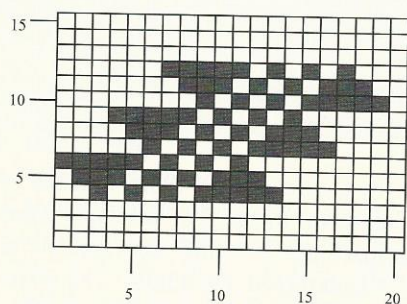
A2: Double bed jacquard: 2 color: Striper  
Backing (back [ribber]  
bed is set to knit).  
Passap DM 80: using  
deco: N/ ← BX; Deco  
set to 4:  
K 2 rows C1/ K 2 rows  
C2.

Passap E6000: Cast on 4  
(or follow directions below) Tech 183:  
N/LX.

Japanese machines: refer to instruction  
manual.

Stitch Size 6/6 [5/5]      7.1 sts/inch  
27.2 rows/inch.

Use any all over two color pattern. In my sample I used the "flint" pattern.



20 sts/15 rows. I varied this motif by alternating the flints. Notice that this pattern is "evenly balanced", meaning that color 1 and color 2 are used evenly. To obtain the approximate stitch and row gauge as above, one should select an evenly bal-

anced pattern. The different "balances" between colors 1 and 2, knit with the same yarns and stitch sizes, would get different gauges. Color 1 has Lycra® with it. If you selected a pattern with more of color 2, you would lose some elasticity or vice versa!

### Knitting Instructions:

A1: Set up needle beds for 2:2 rib:  $\frac{1.11.11.1}{11.11.11}$   
 Racking Handle down [half pitch] 11.11.11  
 Tubular Cast on with Color 1 with 1 end Lycra®: 60 (68,76) sts.  
 (note: 60 needles means inbetween the space of needle # 30 left and #30 right).

Passap: Orange Strippers needed to push Lycra® into hooks of needles.

Turn the racking handle one complete turn left (counter clockwise) [move main bed needles one complete space to the left: needle bed set up now looks like this:

$\frac{1.11.11.1}{11.11.11}$

Row 1 N/N St S 2.5 [0]

K 1 row Hang cast on comb/weights

Passap: Remove Orange Strippers

Row 2-3 CX/CX St S 3.5 [1.5] K 2 rows

[appropriate part buttons engaged for tubular]

Turn the racking handle one complete turn right (clockwise) [move main bed needles one complete space to the right:

Needle bed set up now looks like this:

$\frac{1.11.11.1}{11.11.11}$

11.11.11

Row 4 N/N [knit/knit] K 1 row

Cast on complete. RC 000 (turn row counter to zero) Passap: insert orange strippers.

Knit 9 rows for Part A1. Lock [carriage] is on the left side.

Now, knit the 2 transition rows between part A1 and part A2: Do Not Remove Lycra®.

Bring all empty needles on front and back bed to working position to set up for double bed jacquard knitting. Set locks for tubular knitting (CX/CX).

St S 4.5/4.5 [3/3] Knit 2 rows.

Set locks N/N St S 6/6 [5] K 1 row

This procedure plugs up the holes where the out of work needles are in the 2:2 rib needle bed set up. It is quicker than manually picking up the purl bump below an adjacent stitch and placing it on the empty needles. It is your choice as to which method you use.

A2. Set your machine for knitting the 2 - color jacquard pattern of your choice.

Knit 120 rows (152 rows, 176 rows).

Now, knit the 2 transition rows between part A2 and part B: Remove Lycra®. Color 1 Set Locks to

N/N [knit/knit] St S 4.5/4.5 [4/4] K 1 row.

Transfer all stitches to Front [main] bed. Put needles out of work on back [ribber] bed. Change to black strippers [main sinker plate], stitch size 5 [4]. K 1 row. Break off color 1 as if done knitting and remove weights and comb.

B. Turn into tubular knitting: Unravel 1/4 of the stitches on the right side: 15 (17, 19) sts.

Remove cast-on combs and weights. Set stitch size to 5/5 [4/4].

Bring the center 30 (34, 38) needles to work position on the back [ribber] bed to receive the stitches from the front [main] bed to form the tube. The stitches from the right and left end must be transferred to the back bed in such a way that one can continue to knit tubular. Proceed as follows: place the right 15 (17, 19) stitches on a decker comb [ a multiple transfer tool -20 to 40 stitch holders]. Cover the decker comb with its protection rail if necessary. \*see note for alternative ways of transfer. Turn the decker comb in such a manner as to bring the very edge right stitch to the number 1 center needle on the back bed and rehang the stitches from the decker comb onto the back bed needles. Notice that when this is done, the yarn which had been unraveled, is now positioned at the right edge of your knitting and thus ready to start knitting the tube. Repeat this same procedure for the left 15 (17, 19) stitches, transferring them to the back bed. This completes the tubular set up. Remember to hang on claw weights. Set the locks [carriages] for tubular knitting: CX/CX [part or slip buttons engaged]. Knit 224RC, (276RC, 324RC). RC 000 (turn row counter to zero). This finished part B.

\*Special note: if you do not have decker combs for your machine, you could use a "hand knitters stitch holder or a circular hand knitting needle" to transfer the stitches. Another way would be to knit the stitches which are to be transferred with 6 rows of scrap yarn, drop these stitches from the machine, then rehang the stitches from the scrap yarn to the back bed.

C. Decrease the toe. - 2 . 12 x . 2 R. This means: decrease 2 stitches (1 from front, 1 from back bed) on each side. Knit 2 row counter rows. Repeat this for 12 times. In reality, you are decreasing 4 stitches every two rows. This procedure takes 24 rows. 12, (20, 28) stitches remain. This is 6, (10, 14) on each bed.

Now you must decide how you are going to finish your sock. Here are two suggested options.

1. Latch Tool Bind Off: Change to stitch size 8 on the front bed [ribber bed]. Knit one row. Now change to stitch size 8 on the back [main] bed. Knit one row. Change to scrap yarn, change back to stitch size 5/5. Knit six rows. Remove from machine. Proceed with the latch tool bind off. Remove the scrap yarn. Treat the back bed and corresponding front bed stitch as one stitch.

And pull two stitches thru two stitches.

2. Graft toe stitches together. Do not knit the last two rows on the larger stitch size. Just remove on scrap yarn as in option 1 above. See your instruction manual on the procedure for grafting stitches by hand. Sew part A by hand or machine, tie off ends. Steam sections containing Lycra®.

Review Tips with Lycra®:

Always make a swatch and **steam** this swatch. Lycra® reacts differently to different yarns and fabrics.

Thread the Lycra® in its own tension disc. Do not run it through the disc, just the eyelet guides and take up spring. Some people like to hand feed the Lycra®. Refer to previous Machine Knit America articles on how to work with Lycra®:

Vol. 4: Issues 2 and 3.

*More Lycra® patterns and tips can be found in my book, "Adventures with Lycra®". Contact me direct for more information about purchasing Lycra® or the book. You can reach me on CompuServe, craft forum or: Sharon Nani, 71614,2672. Or The Knit Tree, 21050 Scheer Dr. Redding, Ca 96002. ■*



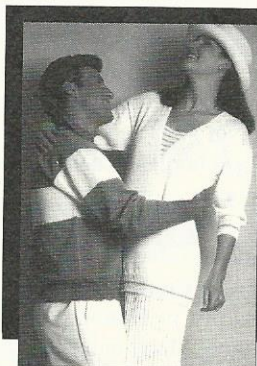
**UK's  
most  
popular  
yarn**

### **Bonnies Wools Quality Coned Yarns**

**French Crepe and  
Sable Crepe in 35  
delicious colors. This  
beautiful acrylic is a  
yarn ideal for all  
seasons and suitable  
for both casual and  
elegant wear. Full  
color, classic pattern  
books available. Send  
\$1 for your color  
card**

**Fiber Fantasy  
6 Hunter's Horn Court  
Owings Mills,  
Maryland  
21117**

Dealer Inquiries Welcome



**DENYS BRUNTON DESIGNER YARNS**

*Suitable for "All" Knitting  
Machines*

*Magicolor-Delux-Duette*

*Loopy-Lou-All-That-Jazz*

*Cotton-Linen*

**(Dealer Inquiries Welcome)**

**Color Card Sets \$6.00**

**Pricing & Ordering**

**Write/Call**

**Also Model Books**

**1-800-772-9276**

**EILEEN'S KNITTING MACHINES & YARNS  
2789 MEDINA RD., MEDINA, OHIO 44256**

**FREE  
COLORCARD  
CALL  
TODAY!**

**A C R I D E L**

**Acrylic Yarn  
5200 Yards/Pound  
1-800-USA-YARN  
OR CONTACT YOUR DEALER**

**Delaine**

**P. O. Box 951 / GASTONIA, NC 28053**